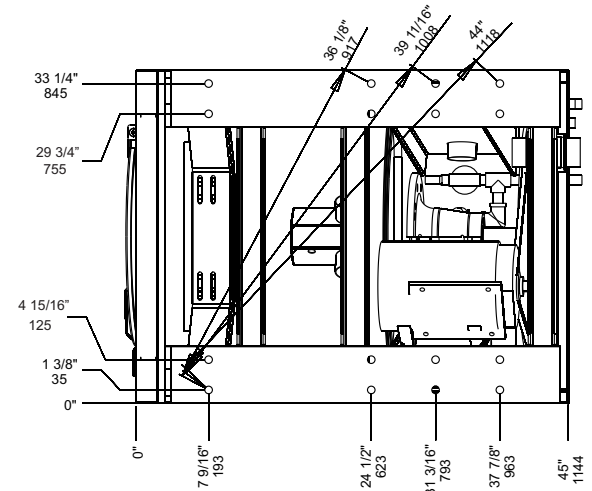
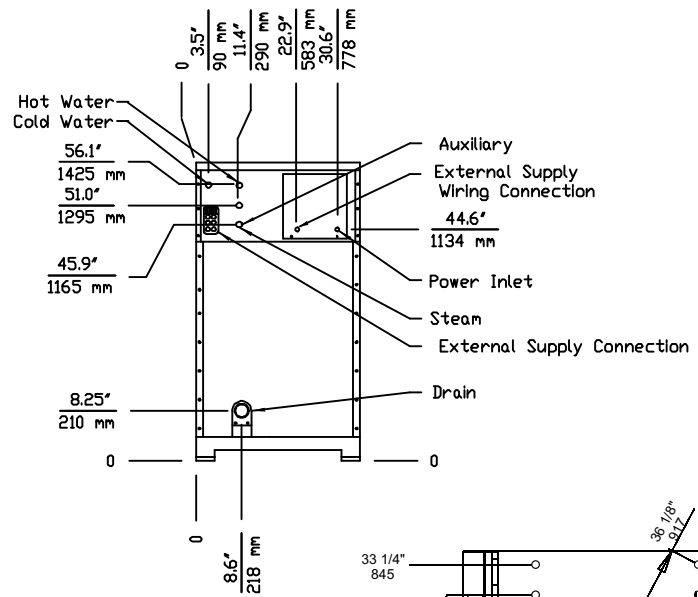
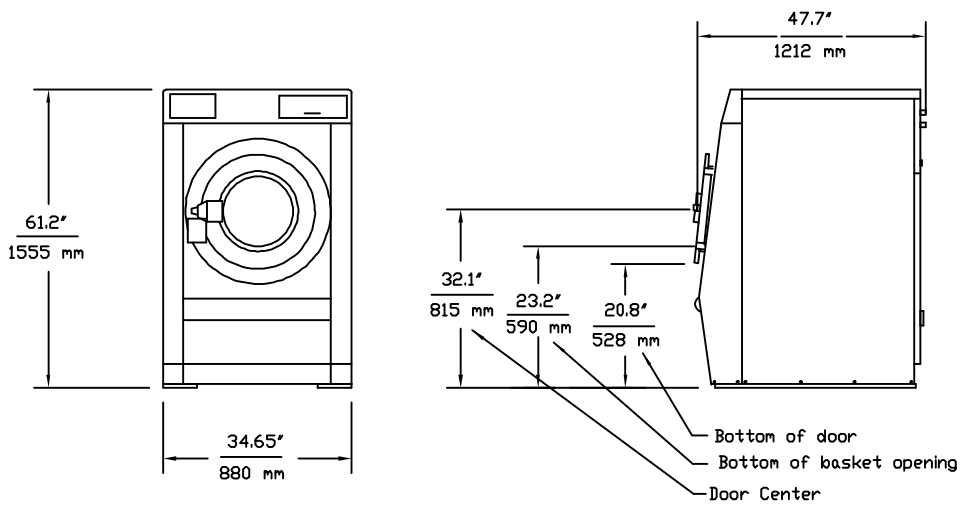


A



Electrical Requirements

Voltage	Phase	System Wire	Amps	Breaker
208-240VAC, 50/60Hz, 1PH	1	2 + GND	8.8	15
208-240VAC, 50/60Hz, 3PH	3	3 + GND	5.1	15
380-460VAC, 50/60Hz, 3PH	3	3 + GND	2.5	15
208-240VAC, 50/60Hz, 3PH Elec. Heat	3	3 + GND	52	60
380-460VAC, 50/60Hz, 3PH Elec. Heat	3	3 + GND	26	30

Drain Requirements

Connection Size		Discharge Rate		Min Sewer Line	
inches	mm	gal/min	liters/min	inches	mm
3	76	62	235	4	102

Water Requirements

Hot Water				Flow Rate (@45PSI/3Bar)		Minimum Supply Line Size		Max Operating Pressure			
Connection Size		Line Pressure		Max Temp		Minimum Supply Line Size		Max Operating Pressure			
US	Metric	PSI	Bar	F	C	US	Metric	US	Metric		
3/4"	DN 19	30-75	2-5	200	93	11	40	1	DN 25	125 PSI	8 Bar

Steam Requirements

Steam				Minimum Supply Line Size		Max Operating Pressure	
Connection Size		Line Pressure		Minimum Supply Line Size		Max Operating Pressure	
US	Metric	PSI	Bar	US	Metric	US	Metric
1/2"	DN 12	30-75	2-5	1/2"	DN 12	100 PSI	6 Bar

Dynamic Load Specifications

Static Load		Dynamic Load		Dynamic Frequency
lbs	kN	lbs	kN	Hz
1300	5.8	1800	8.1	9.7


Shipping Data

Type	lbs	kg	cu ft	cu m
Domestic	1097	499	68	2
Export	1300	591	68	2

MOUNTING BOLT DETAIL

Foundation details are on pages 17-21 in the HE Series Installation & Operation Manual

Actual machine footprint is:
34-21/32" (880mm) W x 40-9/16" (1030mm) D

REV	BY	DATE	REV. DESCRIPTION
A2	AFA	7-31-2023	Added machine footprint
DRAWN BY		DATE	 Panama City, FL Phone: 850-249-2222 Fax: 850-249-2226 www.bandctech.com
A. Adcock		9-30-2013	
CHECKED BY		DATE	
S. Brown		9-30-2013	
DESCRIPTION			
General Technical Specifications			
HE-65			
DATE	FILE NAME	SHEET	
9-30-2013	HE-65GenSpec.cdr	1 OF 1	