



SOFTMOUNT PROFESSIONAL

SP
FAMILY

50 - 65 - 75 - 110 - 135 - 165 - 195
Pound Capacity



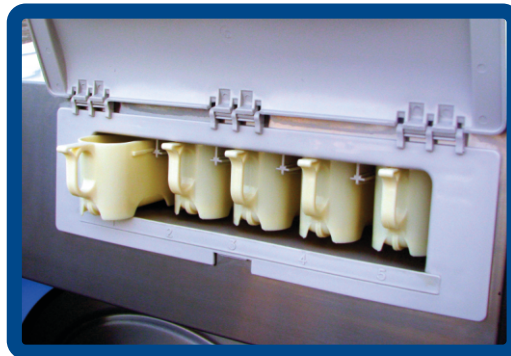
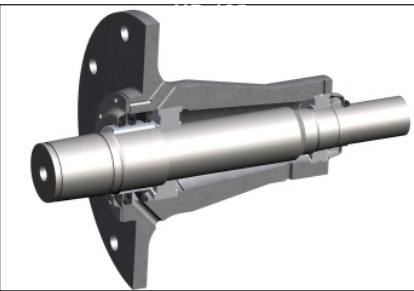
The SP Family

Softmount High-Speed Professional Washer-Extractors for Small to Medium Sized Heavy-Duty On-Premise Laundry Applications, Including Healthcare, Hospitality, Corrections, Athletic, Carwash, Agriculture, and Dry Cleaners / Wet Cleaners

The SP Family is designed to be effortless and powerful while maintaining low cost of ownership. Your investment cost is quickly returned through the increased efficiency of a high speed extract softmount washer. A simple design means fewer parts which in turn means less down time for the machine. With a 350G extract force, goods spend less time in the dryer which leads to increased savings and less wear and tear on goods. This low maintenance, long lasting machine saves you time and money.

Solid Bearing Housing - High Quality Bearings and Seals

The ultimate in commercial washer bearing design is found on the SP Family from B&C Technologies. The life of the bearings is extended through the use of the revolutionary CARB bearings and double lip seals and a Viton® face seal offer extra protection. A large leak off area is provided to further protect the bearings from wash solution. Seals are also greased, increasing their usable life.

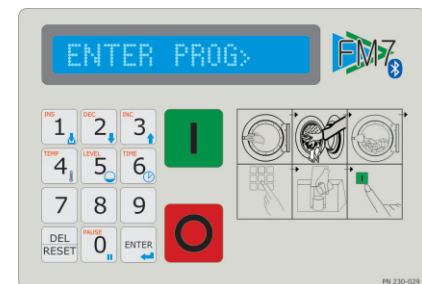


Supply Dispenser

The supply dispenser on the SP Family is conveniently located for easy access and has automatic flushing for ease of use. It's built to take daily wear and tear and is impervious to standard laundry chemicals. Easily adaptable with either the standard one cup or optional five cup and six liquid connections on the rear of the machine. The SP-135, SP-165, & SP-195 feature a 5 cup supply dispenser as standard.

The FM7 Advanced Microprocessor Control

The FM7 control allows complete flexibility while being trouble free and easy to use. It accepts programming via Bluetooth® and offers eight chemical signals plus chemical hold. Our easy to use WashTools™ Android application makes programming easy. With 30 wash programs and programmable water levels and speeds, the FM7 is designed to suit the most demanding needs.



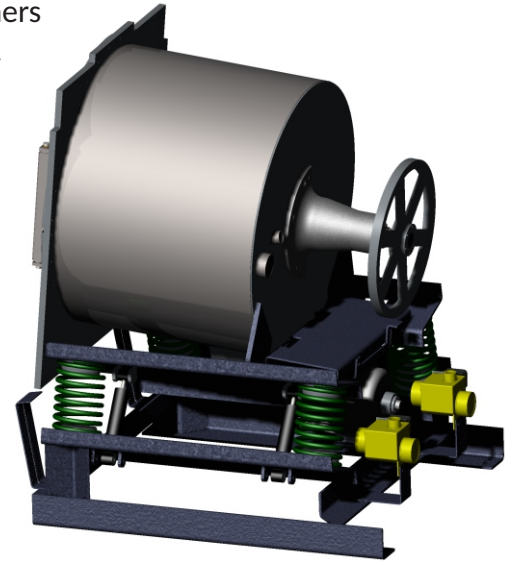
Large Door Opening-Safe Door Interlock

Loading and unloading laundry is much easier and faster with a door that opens nearly 180 degrees. To help protect your investment the door and hinge are made with 304 stainless steel and has a lifetime silicon door gasket for a leakproof seal. The door lock system is both safe and simple to operate.

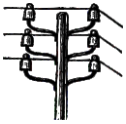


Softmount Construction

The SP Family features a highly engineered, robust, and solidly welded design built to withstand the rigorous demands of continuous operation. 4 bolt holes located at the corners make installation simple. Moving the machine is fast and easy due to the integrated lifting bars which allow the machine to be conveniently moved with a pallet jack.



Modern Design Saves Money and the Environment



Save Electricity

The SP Family washer uses the most technologically advanced frequency inverter available today which offers an improvement of over 30% compared to multi-motor and other line started motors used on older or less advanced machines. The 350G extract force removes significantly more water than older machines with low extract speeds, reducing drying times saving you money on natural gas, time, plus reducing wear on your goods and improving throughput in your laundry.



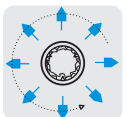
Wetclean Ready and Capable

The SP Family washer is perfect for wetcleaning. Completely flexible programming provides the most gentle wash actions without compromise, allowing the machine to handle water washing as well as regular laundry by simply running a different program. A dedicated wetcleaning machine is not needed as the SP competently handles both duties.



Save Water

Our modern world has produced a host of new technologies to make life easier - your laundry facility can now benefit from these same innovations. The FM7 allows control over the water levels in the machine within one half of an inch, allowing the water level to be dialed in precisely for each wash program step. No more compromising with only 2 or 3 wasteful water levels.



More Savings Through Precision Programming

The flexible FM7 control allows additional water savings through precision programming. It is possible to program a diluting extract, which increases the effectiveness of the rinse steps and eliminates the need for extra rinsing. By eliminating water, wash chemicals and soils in this manner, as many as 2 rinses can be replaced and up to 10 minutes can be saved. Water consumption per cycle can be reduced by almost 1/2 gallon per pound of wash capacity. For example, an SP-135 washer programmed in this manner can expect to save over 60 gallons per wash program.

Specifications

MODEL	Metric	US	SP-50		SP-65		SP-75		SP-110		SP-135		SP-165		SP-195	
Maximum Capacity	kg	lbs	22.7	50.0	29.6	65.0	34.1	75.0	50.0	110.0	61.4	135.0	75.0	165.0	88.7	195.0
Overall Dimensions																
A - Width	mm	in	925	36.4	1003	39.5	1003	39.5	1204	47.4	1300	51.2	1538	60.6	1602	63.1
B - Depth	mm	in	1153	45.4	1231	48.5	1306	51.4	1395	54.9	1600	63.0	1730	68.1	1784	70.2
C - Height	mm	in	1466	57.7	1615	63.6	1615	63.6	1805	71.1	1765	69.5	1826	71.9	1894	74.6
D - Door Swing	mm	in	526	20.7	577	22.7	577	22.7	610	24.0	749	29.5	749	29.5	749	29.5
Wash Cylinder Information																
Cylinder Diameter	mm	in	680	26.8	789.9	31.1	789.9	31.1	940	37.0	1067	42.0	1092	43.0	1174	46.2
Cylinder Depth	mm	in	575	22.6	558.8	22.0	633.7	25.0	690	27.2	660	26.0	757	29.8	780	30.7
Cylinder Volume	liters	cu ft	208.8	7.4	273.9	9.7	310.6	11.0	478.8	16.9	590.1	20.8	709	25.0	844.3	29.8
Motor																
Size	kW	HP	2.2	3	3.75	5	3.75	5	7.5	10	7.5	10	11	15	15	20
Cylinder Speeds (Programmable)																
Wash	G	rpm	0.8	46	0.8	42	0.8	42	0.8	39	0.8	36	0.8	36	0.8	35
Distribution	G	rpm	2	73	2	67	2	67	2	62	2	64	2	64	2	62
Intermediate Extract	G	rpm	150	829	150	583	150	583	150	535	150	360	150	360	150	380
High Extract 1	G	rpm	200	725	200	673	200	673	200	618	200	515	200	480	200	465
High Extract 2	G	rpm	250	811	250	753	250	753	250	690	250	600	250	600	250	580
High Extract 3	G	rpm	350	960	350	890	350	890	350	817	350	767	350	725	350	700
Door Opening																
Door Opening Diameter	mm	in	370	14.6	450	17.7	450	17.7	508	20.0	509	20.0	635	25.0	635	25.0
Height to Bottom of Door	mm	in	655	25.8	740	29.1	740	29.1	800	31.5	820	32.3	830	32.7	870	34.3
Drain System																
Overflow Size	mm	in	38.1	1.5	38.1	1.5	38.1	1.5	38.1	1.5	63.5	2.5	63.5	2.5	63.5	2.5
Drain Outlet Size	mm	in	60.45	2.38	76.2	3	76.2	3	76.2	3	101.6	4	102	4.016	101.6	4
Number of Drains	Standard	Optional	1	2	1	2	1	2	1	2	1	2	1	2	1	2
Steam Inlet (optional)																
Connection Size	NPT		1/2"		1/2"		1/2"		3/4"		1"		1"		1-1/4"	
Water Inlet																
Connection Size	NPT		3/4"		3/4"		3/4"		1"		1"		1"		1-1/4"	
Number of Inlets	Standard	Optional	2	3	2	3	2	3	2	3	2	3	2	3	2	3
Compressed Air																
Connection Size	NPT										3/8"		3/8"		3/8"	
Chemical Supply System																
Number of Dry Chemical Compartments	Standard	Optional	1	5	1	5	1	5	1	5	5		5		5	
Number of Liquid Supply Connections	Standard	Optional	8	12	8	12	8	12	8	12	8	12	8	12	8	12
Liquid Supply Connection Size	NPT		1/2"		1/2"		1/2"		1/2"		1/2"		1/2"		1/2"	
Weight and Shipping Information																
Net Weight	kg	lb	545	1200	623	1371	644	1416	967	2128	1465	3222	1755	3862	2205	4851
Shipping Weight	kg	lb	557	1225	636	1400	657	1445	984	2165	1486	3270	1780	3915	2232	4910
Electrical Service																
208-240VAC, 50/60HZ, 1PH	Amps	Breaker	9	15	14	15	15	20	31	40	n/a	n/a	n/a	n/a	n/a	n/a
208-240VAC, 50/60HZ, 3PH	Amps	Breaker	6	15	8	15	9	15	18	20	26	30	32	40	58	60
380-460VAC, 50/60HZ, 3PH	Amps	Breaker	3	15	4	15	4	15	9	15	13	15	16	25	29	30
208-240VAC, 50/60HZ, 3PH Elec. Heat	Amps	Breaker	49	60	52	60	53	60	97	100	n/a	n/a	n/a	n/a	n/a	n/a
380-460VAC, 50/60HZ, 3PH Elec. Heat	Amps	Breaker	25	30	26	30	27	30	48	50	n/a	n/a	n/a	n/a	n/a	n/a

Standard Features:

- ◆ All wetted parts are 304 (18/8) stainless steel
- ◆ 1 compartment supply dispenser
- ◆ 30 cycle microprocessor
- ◆ 350G extraction force
- ◆ 5 degree lean back for strength and easier loading
- ◆ Built in vacuum breaker
- ◆ Variable speed inverter drive
- ◆ Wetcleaning functionality built in – no special options required

Optional Features:

- ◆ 5 compartment supply dispenser (standard on SP-135 and larger)
- ◆ Extra water inlet
- ◆ Extra drain
- ◆ Steam heating
- ◆ Electric heating



B&C Technologies
Panama City Beach, FL
850-249-2222
www.bandctech.com
sales@bandctech.com

Specifications subject to change without notice

60/36 Warranty

60 Months: Bearings, Bearing Housing, Frame, Shaft, Cylinder & Shell
36 Months: All other non wear parts

